

FPMMetals.com  
Email: Sales@FPMMetals.com  
PH: 402-729-2264 Fax: 402-729-2265



PO Box 16  
224 Sixth Street  
Fairbury, NE 68352

## Trailer / Lift Replacement Parts

5' Slider 2.5" Sq. Tube



Spring Balance  
Bottom Bolt  
1/2" x 4 1/2"



Spring Balance  
Counterbalance  
2 1/4" Dia. x 31.5" C/C

10' Slider Rails  
3" Sq. Tube Right & Left



Spring Balance  
Top Bolt  
1/2" x 1 3/4"

FPMMetals.com  
Email: Sales@FPMMetals.com  
PH: 402-729-2264 Fax: 402-729-2265

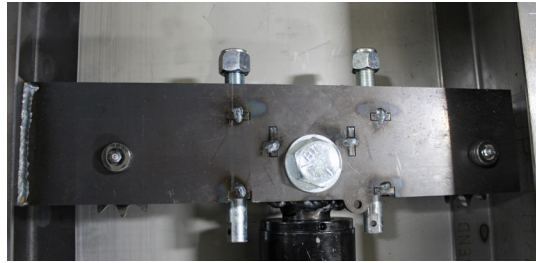


PO Box 16  
224 Sixth Street  
Fairbury, NE 68352

Cylinder Box Cover



Ramhead Bolt & Nut  
with Chain Tighteners



Hydraulic Cylinder  
3" Dia. 40" Stroke



Cylinder Box  
for 102" Trailer

FPMMetals.com  
Email: Sales@FPMMetals.com  
PH: 402-729-2264 Fax: 402-729-2265

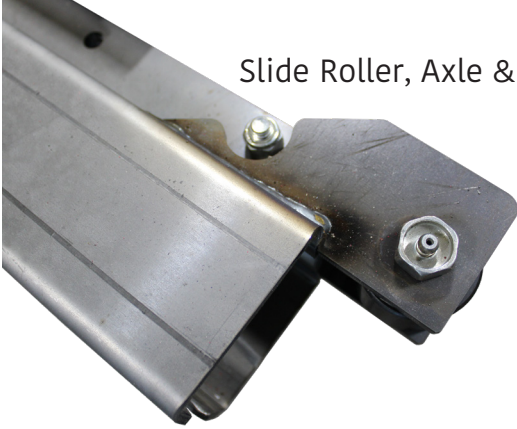


PO Box 16  
224 Sixth Street  
Fairbury, NE 68352

Hand Held Remote



Slide Roller, Axle & Nut



Sprocket  
15 Tooth #60



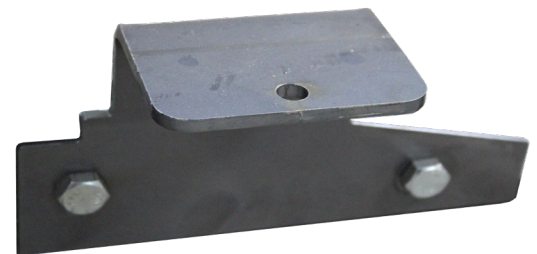
Platform Latch Bracket



Down Control Valve



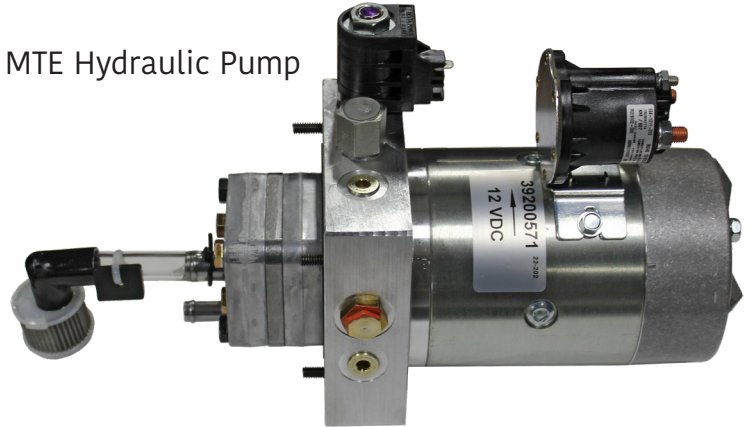
Platform Latch Ear



Master Disconnect



MTE Hydraulic Pump



Pivot Pin & Lock Collar



Double Pump Reservoir



Sprocket Axle 3/4", Washers & Nut



Roller Chain Adjustment Bolt 3/4" x 6"

